

It has been an excellent year where a lot of advances have been made. This year's successes are due to a wide range of professionals working together and recognising the importance of the 'deeper underlying causes' of teenage pregnancy such as poverty, exclusion and poor educational attainment.

In February, the final 2008 figures were released which, were disappointing and saw an increase on the 2007 figure resulting in a reduction of only 1.4% up to 2008 from the 1998 baseline. However, although it is not possible to give the final official 2009 figures until next year, the rate for quarter 1 has been released and shows a reduction of 15.2% since the baseline. Quarter 1 saw a total of 59 conceptions of which 33 resulted in termination. The annual number of terminations has reduced by 33% from 2008 with only 87 terminations to under-18 year olds. This is the third lowest in the region, although most areas have seen a decline. Using local data we estimate to be very close to achieving the 2009 Local Area Agreement target of a 39% reduction and it is hoped that the quarterly released Office for National Statistics data will continue to reflect this.

During the year, the Borough wide partnership approach has resulted in a number of key pieces of work which have had a positive influence on progress. These include;

- The opening of 4 additional youth clinics.
- Redesign of Youth Clinics allowing 10 out of the 12 to offer long acting methods of contraception.
- The introduction of an incentive scheme for GP's providing contraceptive implants to under 19's.
- 95% uptake of contraception post termination within the Pregnancy Advisory Service.
- Allocation of funding from the Strategic Health Authority.
- The first Sexual Health Enrichment Officer employed within RCAT college to provide sex education, advice, support, free condoms and Chlamydia screening.
- The creation of 'The S-word, we need to talk about sex' campaign and website which is held as a model of good practice by the regional Government Office. The quarter following the campaign launch saw an increase in youth clinic attendance of over 100% on the previous quarter and also saw the highest uptake of LARC methods for the year.

- The launch of InControl magazine focussing on different topical sexual health issues.
- The first Rotherham Sexual Health Week took place in December and was a great success in raising awareness of safe sex. Sheffield are hoping to come on board for a cross border Sexual Health Week in 2010.
- The Maltby Linx Young Women's Project, a targeted prevention project was awarded the regional Health and Social Care Award for Success in Partnership working and was one of the three national finalists. The project model was rolled out to Rotherham North and Wentworth South.

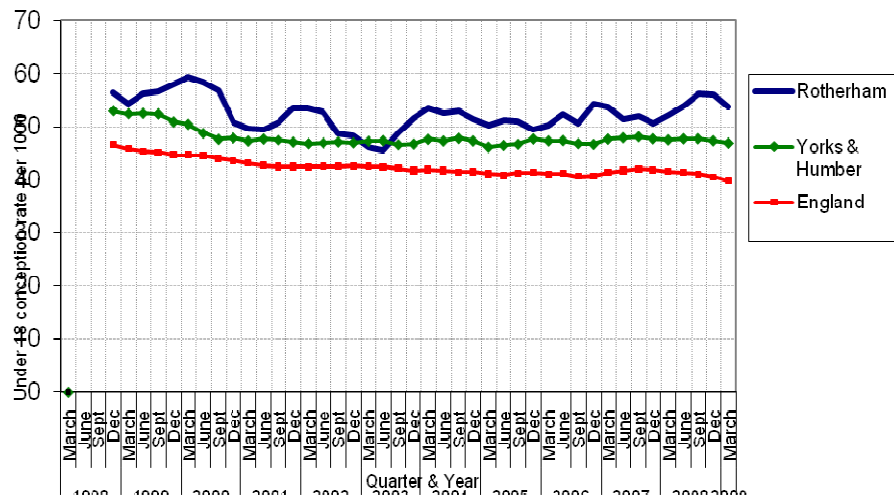
There has been slow progress with the help72 free Emergency Hormonal Contraception Scheme which was implemented in December 2008 and numbers are now beginning to rise steadily as the scheme becomes more established. There have been some small steps forward with the school nursing service however there is still work to be done to ensure that all young people are aware of the support offered by their school nurse and the service provided is equitable throughout the Borough.

There were also a number of environmental and social factors that should be considered for this year. These include:

- the economic downturn
- Shrinking labour market
- Staff changes and a 50% reduction of the teenage pregnancy/sexual health team.

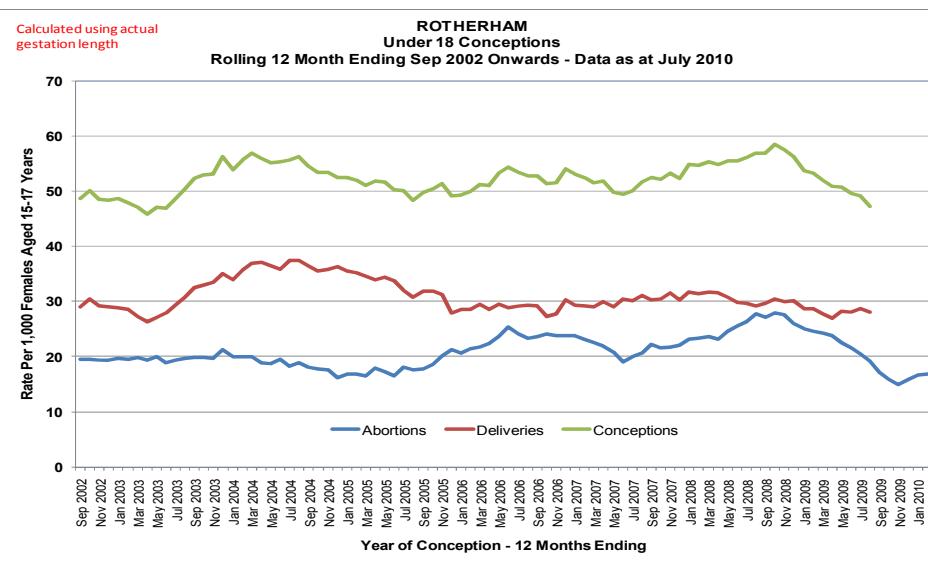
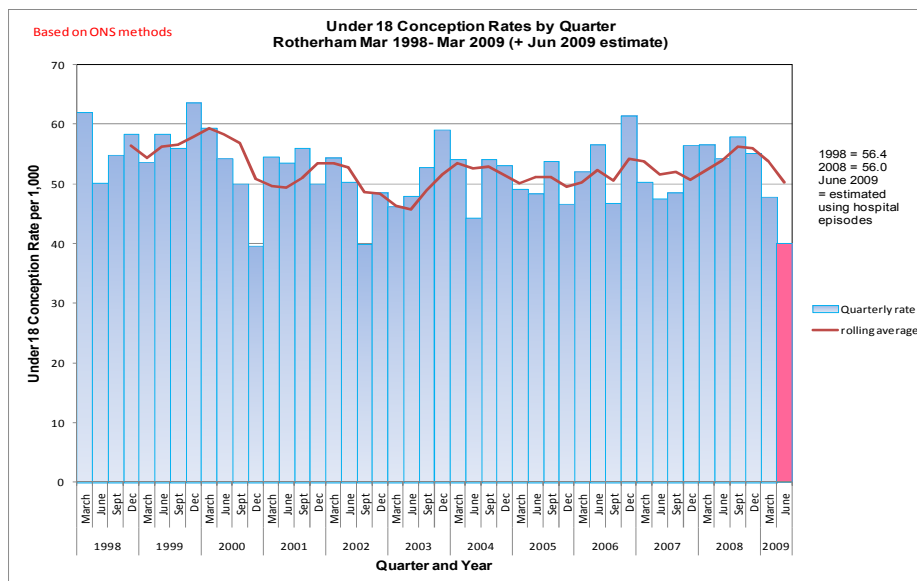
This year has been a turning point for the Teenage Pregnancy Strategy and it is essential that this strong focus is maintained not only to reduce under-18 conceptions, but to reduce child poverty, those 'Not in Education, Employment or Training', infant mortality, exploitation of young people, safeguarding of children and young people as well as many wider health and social issues.

Office for National Statistics Data up to Quarter 1, 2009



	Mar	Jun	Sept	Dec	Mar	Jun	Sept	Dec	Mar
Rotherham	1998	1998	1998	1998	2008	2008	2008	2008	2009
Rolling quarterly average				56.4	52.3	54	56.2	56.1	53.8
Quarterly rate	62.1	50.1	54.9	58.4	56.5	54.3	57.7	55.8	47.8
No. of conceptions	73	59	65	69	72	69	74	70	59
Yorks & Humber									
Rolling average:				53	47.5	47.7	47.7	47.6	46.9
England									
Rolling average:				46.6	41.6	41.3	41.1	40.7	39.8

Up to the end of Quarter 1, 2009 data supplied by the Office for National Statistics represents a 15.2% reduction for Rotherham from the 1998 baseline.

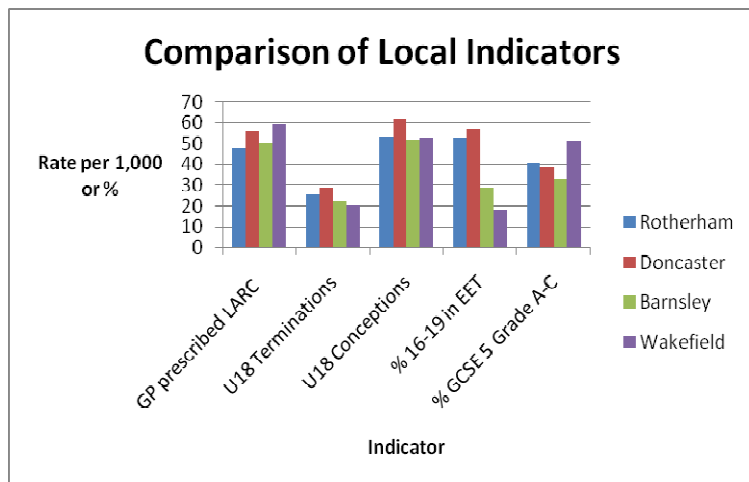


Nationally at the end of 2008, the rate was 40.4 per 1,000, representing a percentage reduction of 13.3% from the 1998 baseline.

It has been estimated that up to May 2009 there has been reduction of 17.6% (a rate of 46.7 per 1,000 15-17 year old girls).

Comparison of Local Indicators

- Under 18 conceptions (2008 – per 1,000 15-17 yr old females)
- Under 18 terminations (2008 – per 1,000 females)
- GP prescribed Long Acting Reversible Contraception
- % of 16-19 yr old mothers in EET (known to Connexions)
- % GCSE achievement 5 A-C grades including English and Maths for teen parents (2007-08)



LARC

Service	LARCS				All Contraceptives				% of all Contraceptives			
	Q1	Q2	Q3	Q4	Q1	Q2	Q3	Q4	Q1	Q2	Q3	Q4
CASH 18+		354	401	401		1205	1264	1396		29%	32%	29%
Cash -18		92	110	119		536	691	772		17%	16%	15%
GP Prescribing 18+		1782	1835	1721		13419	11708	12792		13%	16%	13%
TOPS 18+		34	55	5		98	118	11		35%	47%	45%
TOPS -18		2	9	54		7	10	105		29%	90%	51%
Total		2264	2410	2300		15265	13791	15076		Mean: 25%	Mean: 40%	Mean: 31%

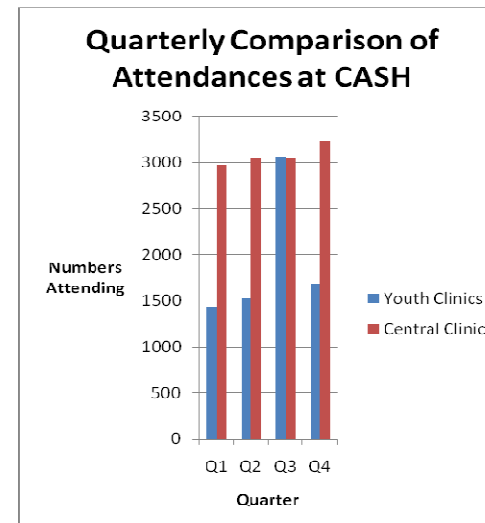
*Q1 information not available

CASH

£10,000

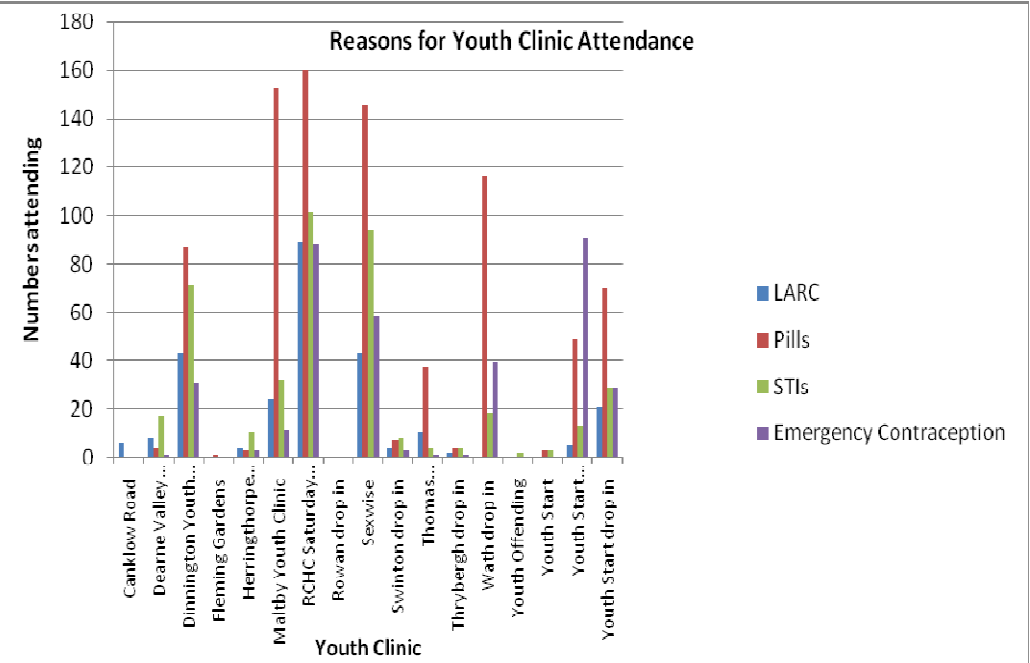
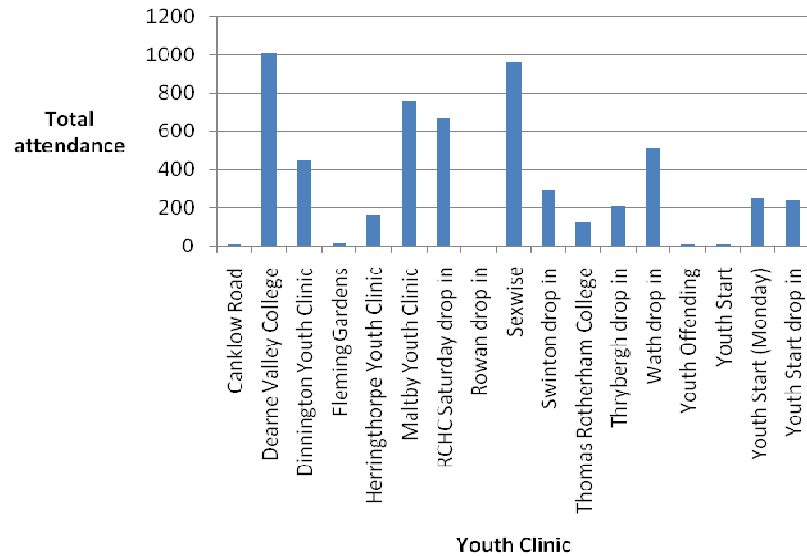
Aims

- To contribute to the reduction of teenage pregnancies in Rotherham.
- To increase the uptake of LARC in Rotherham, in particular amongst 13-18 year olds.
- To contribute to the reduction of STI's amongst under 25 year olds in Rotherham.



Over 20,000 young people attended Central Clinic and Youth Clinics during 2009/10.

Annual Attendance to Youth Clinics



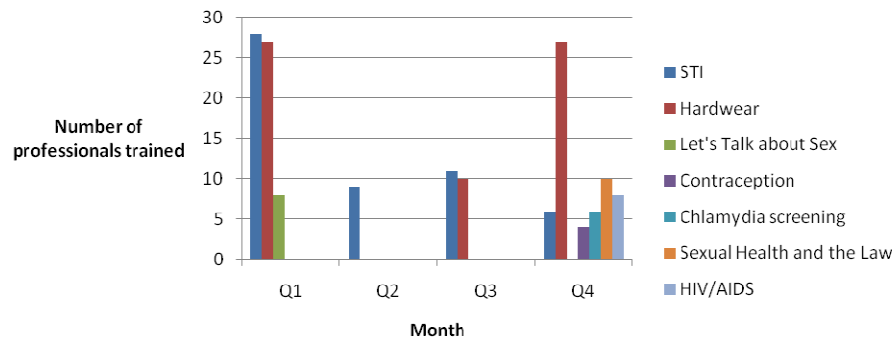
Training Programme and Progress

We have delivered a variety of training sessions to professionals across Rotherham including school nurses, GP's, youth workers and Health Care Assistants. Feedback suggests we are delivering good quality, informative and relevant training in Sexual Health. The vision for the future involves coordination of a mandatory sexual health training programme by CASH to a wider reach of professionals working with young people.

Hardwear

This is by far the most widely delivered Sexual Health Training and a total of 600 professionals have trained. Of which, 59% are currently operating the scheme in venues across Rotherham. We aim to increase the percentage of people operating the scheme and undertake a review of all those trained. Between April 09 and March 10 the Hardwear website had 1,778 visits. This website provides information for parents, professionals and young people. It is anticipated that CASH will run the scheme in the future.

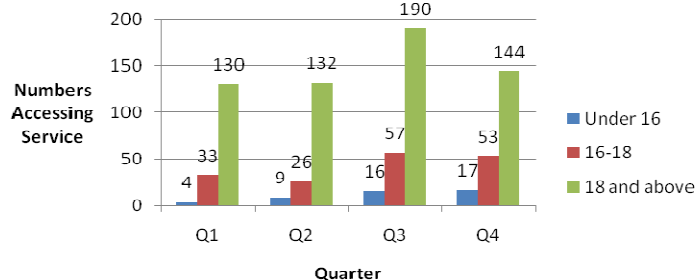
Sexual Health Training Overview 2009/10



Help 72

A large advertising campaign was publicised by Hallam FM to re-launch Help 72. The adverts featured on billboards and at bus stops across Rotherham's main routes as well as targeting high teenage pregnancy rate areas. As the scheme is relatively new, we foresee usage to increase over time as it becomes more established and embedded.

A Quarterly Comparison of Help 72 Access



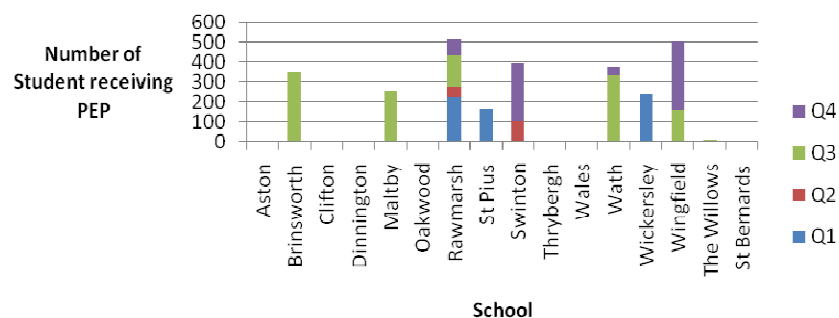
Healthy Schools

SRE £15,500

Aims

- To contribute to the reduction of teenage pregnancies in Rotherham.
- To contribute to the reduction of STI's amongst under 25 year olds in Rotherham.

Quarterly comparison of PEP Talks by School



Peer Education Project (PEP) Talks were delivered to 2,808 pupils in over 72 sessions in 10 secondary schools. Pep Talks involves a team of young mums delivering peer education sessions about the realities and difficulties of being a teen parent.

The Healthy Schools team achieved 97% against their stretch target of 95% of Rotherham Schools achieving Healthy School status, which included ensuring their Sex and Relationship Education (SRE) as part of PSHE, was in line with the standards.

During the financial year 1st April 2009 to 31st March 2010:

There were 14 launch events for the new electronic Rollercoaster primary school SRE resource. Rollercoaster was designed by the Rotherham Healthy Schools team and all Rotherham Primary Schools received a free copy. This resource is now available and used in other Local Authorities.

As part of Sex and Relationships Education, the Healthy Schools team organized for 18 primary schools to receive a piece of 'Theatre in Education' called 'My Mate Fancies You.' This evaluated well and a number of primary schools have opted to fund this independently in the future.

SRE school support took place including training and Parents' Evenings in 4 primary schools and 6 secondary schools as requested. In addition, one full day course on SRE was held for secondary schools and one for primary schools. The PSHE Continued Professional Development one year course was also supported by the Healthy Schools team and had 22 participants.

Teenage Pregnancy re-integration Officer (TPRO)

The TPRO supports schools and young women when pregnancy occurs whilst a girl is still in compulsory education. In 2009, 20 girls were referred to the TPRO, of which, 15 went on to attend the Rowan Centre, a special education unit for school aged mums and 5 were supported to remain in mainstream schools.

Teenage Parents Project (ceased at the end of March 2010)

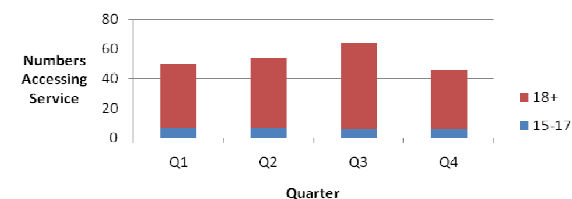
£20,000

Aim

- To increase the number of teen parents in Education or training through information, advice and support to access education, training, childcare and related financial benefits.

The aim of the project was to support teenage parents in accessing care to learn funding to enable them to fund childcare on their return to education or training.

Quarterly Comparison of Access to Education and Training



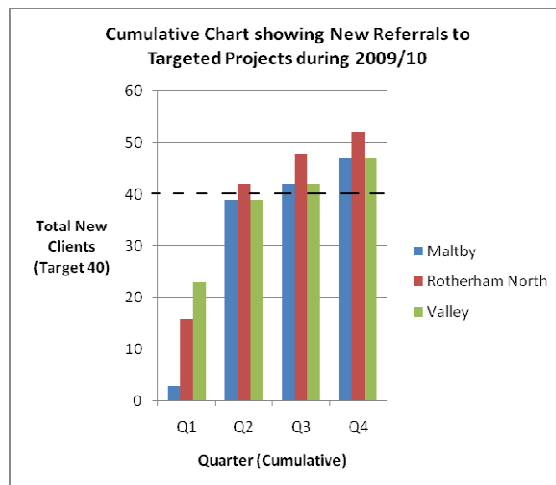
The partnership Board decided that the work of this project should be delivered through mainstream provision such as the Connexions service. Therefore, teenage pregnancy funding ceased at the end of March 2010.

Targeted Projects

£165,000 for 2009/10

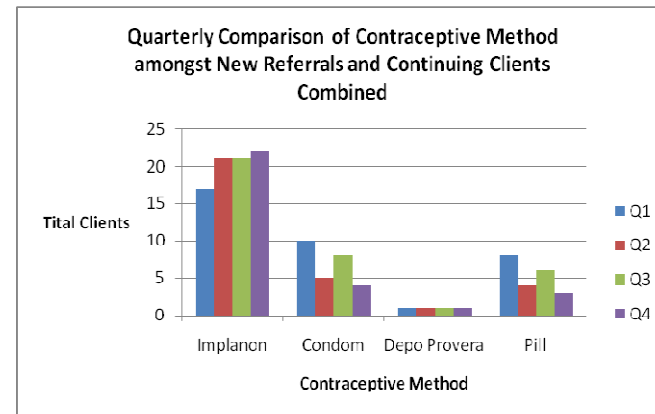
Aims:

- To contribute towards the work of the Teenage Pregnancy and Sexual Health Strategies, with the overall aim of reducing the number of teenage conceptions through raising aspirations, self esteem, providing alternative life choices for girls at high risk of teenage pregnancy.
- To address contraception and sexual health needs.
- The projects will work with under 18's, giving priority to 15-17 year old girls, those in care and/or those not attending education, employment or training.



Maltby Young Women's Project

Of the 47 new referrals aged 12-17, all 47 were taken on by the project. 72 clients continued to access the service throughout the year (all aged 12-17).



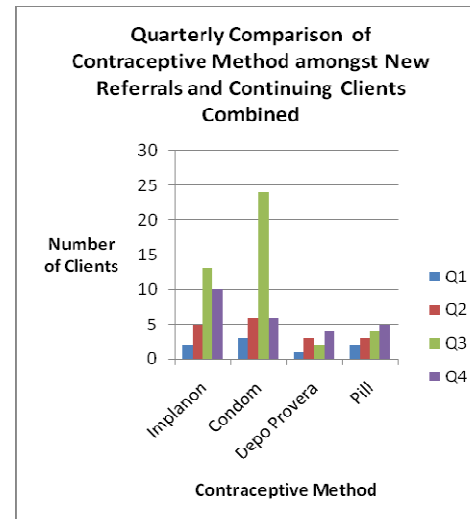
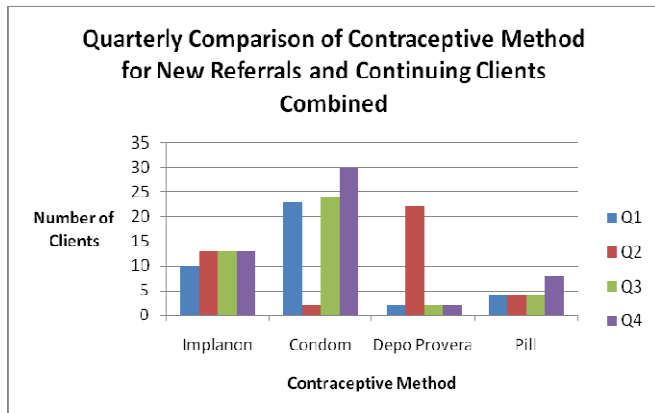
The 25% Chlamydia screening target was met as 80 screens were completed. 184 C-Cards were issued this year. An additional 366 young women were supported by the project, as part of the generic youth work, Children's Fund Work and additionally for this project. None of these young people supported are known to have become pregnant.

Approximately 50% of the young women's families received support from Social Care. 3 were looked after children while others were on the Child Protection Register. 87 young men accessed the service and of all school leavers who accessed the project, all except one progressed into further education, employment or training.

Where individuals were not attending school, the project provided an opportunity to engage in informal learning.

Rotherham North

Of the 876 new referrals made, 107 were taken on by the project (all aged 12-17). 33 clients have continued to access services (all aged 12-17). All have worked on gaining an AQA Qualification. The 25% Chlamydia screening target was achieved as 61 screens were completed.



Rawmarsh CHAT (Transferring to CASH as of April 2010)

£6,000

Aims

- To contribute to the reduction of teenage pregnancies in Rotherham.
- To contribute to the reduction of STI's amongst Under 25 year olds in Rotherham.

It is noteworthy that the demand for support of this project completely outweighs current capacity. Issues around sexual exploitation have been highlighted in this area of Rotherham this year. The workers of this project also staff Wingfield youth clinic. We aim to increase the uptake of Long Acting Reversible Contraception (LARC).

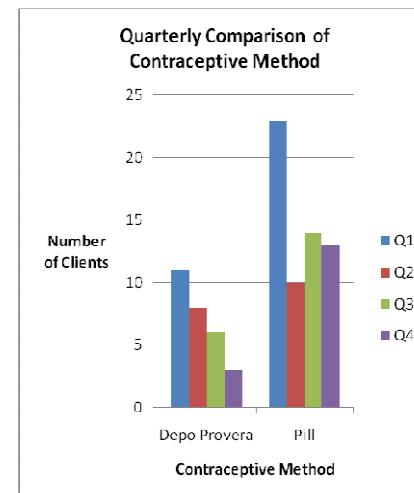
Valley Young Women's Project

The project has taken on 46 new clients from a total of 52 referrals made. All were aged 12-17. 78 clients continued to access the service, all of whom are under the age of 18.

The project did not meet the Chlamydia screening target for the year. In order to increase future screening we aim to work collaboratively together with Terrence Higgins Trust (THT).

In addition, workers of the project also staff Thrybergh and Herringthorpe youth clinics. We aim to increase the uptake of Long Acting Reversible Contraception (LARC).

CHAT which stands for Confidential Health Advice for Teenagers and is based on site at Rawmarsh Comprehensive was managed by an independent steering group who unfortunately, felt they could no longer commit their time to the project and potentially, funding was to come to an end. The service which was valued widely has been transferred over to CASH services and has been brought in to line with other youth clinics. Now delivered by CASH and the youth service, a full range of contraception, including the implant is available on site.



A total of 427 young people accessed CHAT this financial year, a total of 74 males and 353 females. Of these, 188 were aged 12-14, 217 were 15-17 and 17 were over the age of 18.

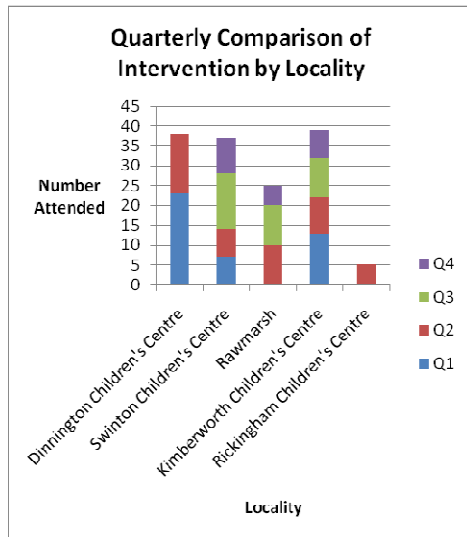
Barnardo's Young Mum's Project

£7,000 (Funding to cease March 2010)

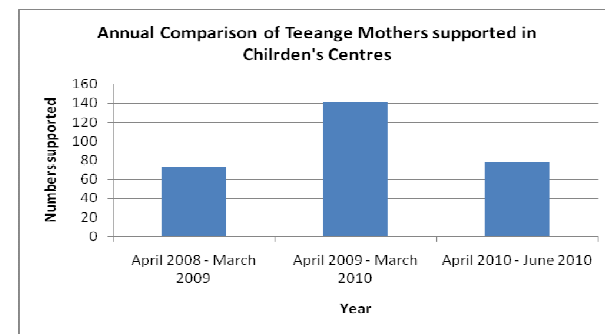
Aims:

- Reduce the Under 18 conception rate by 50% by 2010.
- Increase the proportion of teenage mothers aged 16-19 in education, training or employment by 60% by 2010 to reduce the risk of their long term social exclusion.

This partnership project also received financial support from Rotherham MBC Early Years and Childcare Service. It assisted Children's Centres to set up groups for young mums by providing expert support via Barnardo's. Over the course of the year, 167 young people accessed the service. Clients consisted of 148 females and 10 males, with 37 aged between 15-17 and 130 aged 18+.



The Partnership Board took the decision to end the project as the work undertaken should form part of mainstream services. Furthermore, the service was providing the majority of their support to over 18's, as opposed to our target age range of 15-17 year olds. The project was not achieving its outcomes in terms of getting young people back into Employment, Education or Training (EET).



College Enrichment Officers

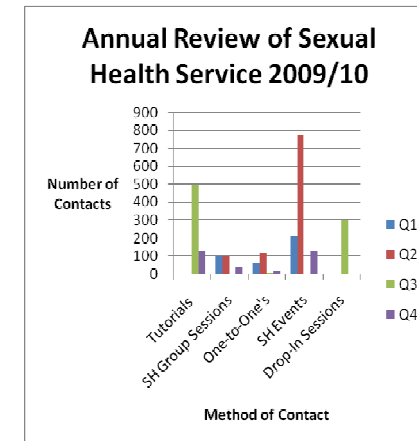
£22,500 for 2009/10

Aims:

- To minimise the number of teenage pregnancies within college and potentially consequent college drop outs.
- To contribute to the reduction of STI's amongst students.

The role provides group sexual health education and information sessions, one to one support, specialist events and offers Chlamydia screening and condoms via the Hardwear Scheme.

RCAT

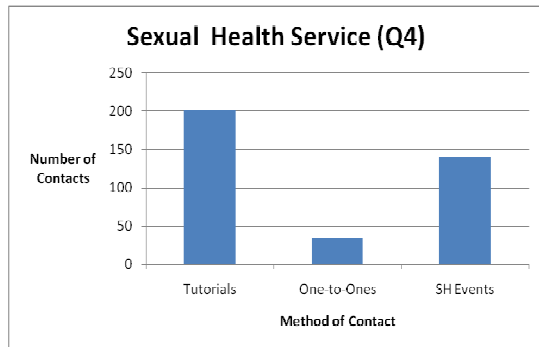


The RCAT Sexual Health Enrichment Officer came into post in April 2009. As a result, 4 members of staff received Sexual Health Training and 79 young people were signposted to other Sexual Health services for contraception and STI advice. 772 students attended Sexual Health education sessions and 89 students attended one-to-one appointments.

Evaluation from education sessions suggest an increased awareness of Sexual Health issues. NHS Rotherham and RCAT college agreed to part fund the post for 2010/11 as this funding was originally temporary from the Strategic Health Authority (SHA).

Dearne Valley College

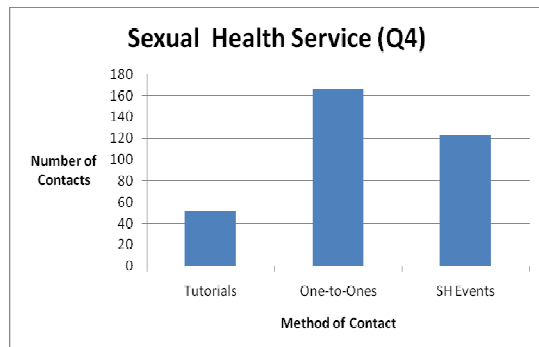
This is a new post as of January 2010 so no annual review can be provided.



There has been one known conception in Quarter 4. 155 Chlamydia screens were completed and 8 students were signposted to other services to access both contraception and STI advice.

Thomas Rotherham College

This is a new post as of January 2010 so no annual review can be provided.



135 Chlamydia screens were completed and 28 students were signposted to other services to access both contraception and STI advice. 3 other Sexual Health related agencies delivered in college this quarter and one additional member of staff from the college was trained in Sexual Health issues and related effects on young people.

Additional Support Services

Fleming Gardens

Fleming Gardens is a supported housing project for young mums and young mums-to-be aged 16-25 (priority is given to 16-19 year olds). The project aims to reduce the effects of isolation associated with being a teen parent. It offers purpose built accommodation with support, tenancy support and pre-tenancy support on an outreach basis. During 2009/10, 46% of young women were exempt from NEET (over 29 weeks pregnant, child is under 9 months or in receipt of Disability Living

Allowance). Of the remaining service users, 49% (21 out of 43) were in EET and 31% of service users breastfed their baby.

Looked After Children (LAC) Nurse

The Looked after Children Nurse delivered 4 full days of Sexual Health training to Residential Workers and to Foster Carers. In the future, alternative methods of delivering Sexual Health training need to be sought due to limited capacity of the LAC Nurse at present. In addition, investigation into foster carers and care home staff receiving training in order to operate the Hardwear condom distribution scheme is necessary as well as identifying how to get vital service information out to them.

Youth start - £10,000 for Additional Day

During 2009/10, Youth Start was open for an additional 47 days, with total numbers attendances reaching 744 for the year. Of these clients, 63% were female and 37% were male and aged between 14 and 19. 41 Pregnancy tests were carried out resulting in 4 positive results and a total of 98 Chlamydia tests were completed throughout the year.

Youth Service

During 2009-10, the Youth Service delivered an estimated 876 Sexual Health information and advice sessions reaching approximately 10,611 young people. A total of 1,111 students undertook curriculum activities, see the breakdown table below.

Breakdown of Curriculum Headings	Sessions
Health (Physical)	87
Health (Lifestyles)	109
Identity	41
Parenting / Caring / Childcare	176
Relationships	391
Health (Sexual)	285
Sexual Orientation	6
Sexism	10
Sexual Exploitation	6

Please note, these training sessions may have been delivered as part of the Targeted Projects Youth Work.

In addition, the Youth Service have been the joint provider of the contraception and sexual health youth clinics alongside CASH as well as provided coordination of sexual health work within the youth service.

GROW

GROW provides a unique holistic service that enables Rotherham women and their families to make informed choices. In 2009, 170 young mums engaged in the Peer Mentoring project which was a 3 year partnership between GROW and the Rowan Centre. The main aim was to engage young mums in training and volunteering opportunities to support other young mums. Over the course of the project, 65 young parents took part in the training programme which received very good feedback.

The Young mums and Young mums-to-be Project provides health education for them and their families. A total of 30 young mums were supported, of which 20 took part in training.

Funding for the project ceased in 2010.

Rowan Centre

92% of the girls achieved at least 1 GCSE A*-G and 50% achieved at least 5 GCSEs A*-G. One member of the cohort received 8 GCSEs (6 of which were at grade C). All girls were offered a wide range of activities that included core subjects as well as parenting, food technology and art.

Rowan also offers a 12 week course for teen parents and parents-to-be aged 16-19 named 'Parents with Prospects'. The course covers modules in child safety, bonding, and play, as well as learning key skills. The table below highlights the main outputs for the course:

	Achieved	Target	Target
	Total	Sept –Mar 09	Sept to May 2009
Beneficiaries visited by Support worker	33	36	36
Beneficiaries visit to nursery and/or training establishment	27	23	23
Beneficiaries agreed to start course (engaged)	32	30	30
Individual Learning Plans started	32	30	30
No's of young people achieving 1 unit towards accredited qualifications	19	20	20
No's of young people completing the mandatory units towards NCFE certificate.	10	10	14
			*expected16
No's of NCFE certificates awarded	8	6	14
			*expected 16
No's of young people achieving a Basic Skill in Literacy	9	7	9
			*Now achieved 10
No's of young people achieving a Basic Skill in Numeracy	8	9	12
			*Now achieved 10
No of young people working towards a positive destination	11	9	15
			Expected 12
No of young people achieving a positive destination (EET)	3	6	15
			Expected 12

Funding Breakdown for 2009/10

Funding Body	Amount	Workstream
RMBC	£197,000 (not ringfenced nor guaranteed after 2010/11)	Teenage Pregnancy element of area base grant
2009/10 Strategic Health Authority Funding		
SHA	£87,000	Increasing access to contraception
SHA	£22,500	1 WTE Sexual Health Enrichment Officer
2009/10 Operational Plan Funding Allocations		
NHSR	£165,000	Targeted Projects
NHSR	£70,000	LARC Nurse & Contraceptive Nurse in hospital
NHSR	£13,000	Condom Distribution Scheme
NHSR	£30,000	Youth Clinic Developments
NHSR	£10,000	Sexual Health Needs Assessment
NHSR	£80,000	Help 72 free EHC in Pharmacies Scheme
NHSR	£35,000	Implanon LES for Under 19's
2009/10 Main NHSR Contracts		
NHS	£540,000	Contraception and Sexual Health Service
NHS	£3,000	Pregnancy test supplies
Total	£1,252,500.00	